

FLINT RIVER QUARIUM
ENVIRONMENTAL EDUCATION CENTER

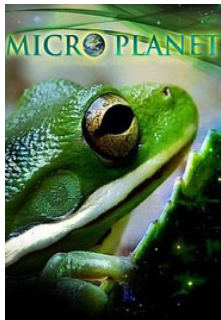
IMAGINATION THEATER



WATERMELON MAGIC

38 minutes -- Best suited for Grades Pre-K-2nd

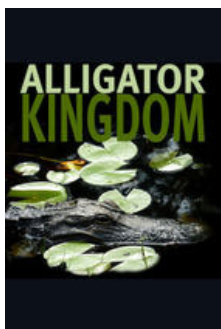
Young audiences will delight in this nearly wordless film as they discover one of our most basic needs: healthy food. Follow along with Sylvie, the young daughter of a farmer, as she explores and learns the journey of watermelons—from seed to sale. As Sylvie and her watermelons near the end of their journey together, will she be able to let her baby watermelons go?



MICRO PLANET

33 minutes -- Best suited for Grades 1st-6th

Stunning microfilming takes viewers on an unforgettable journey, giving a close up look at the tiny creatures of hidden ecosystems. Meet the thieves, assassins, and gentle souls that inhabit these secret kingdoms and worlds that thrive without us—and even in spite of us. A portion of this presentation was filmed at the Flint RiverQuarium during the summer of 2012.



ALLIGATOR KINGDOM

28 minutes -- Best suited for Grades 4th-12th

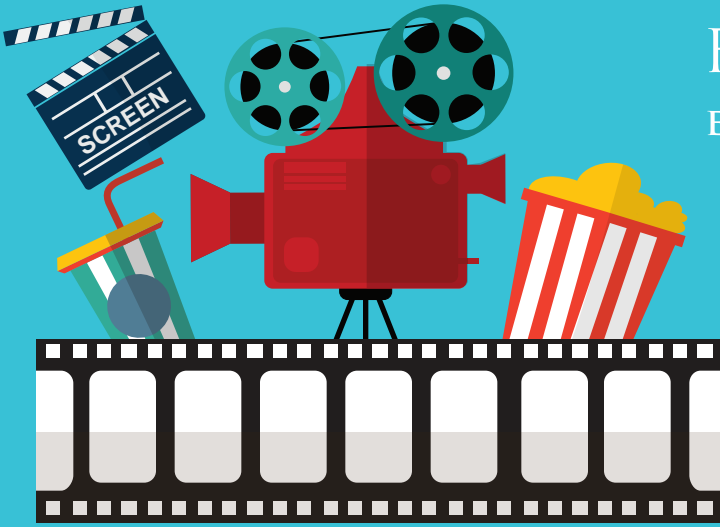
Exploring Georgia's own Okefenokee Swamp, *Alligator Kingdom* educates viewers on the swamp's complex ecosystem and the vital role that this feared reptile plays. The filming and photography offer a look into the more remote and inaccessible areas of one of the last great black water swamps.



KINGS OF BAJA

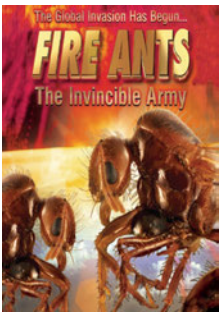
46 minutes -- Best suited for Grades 6th-12th

Travel the wondrous Baja Peninsula in Mexico as you watch *Kings of Baja*. There are few other places on the planet that are more forbidding and beautiful than this stunning ecosystem. Ten million years in the making and eight hundred miles long, it is home to a foreboding desert and a diverse sea filled with sea lions, manta rays, great white sharks and whales. *This film does contain references to evolution.*



FLINT RIVER QUARIUM
ENVIRONMENTAL EDUCATION CENTER

IMAGINATION THEATER



FIRE ANTS

36 minutes -- Best suited for Grades 5th-9th

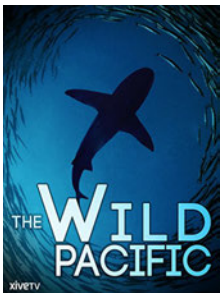
In the film *Fire Ants*, you will explore the secret world of the fire ant and the innovative research that is being done to stop their 80+ year invasion. Crop destruction, equipment repair, pest control and more have caused more than \$6 billion in damages. Now, scientists are cracking down on this ancient society and breeding winged assassins to hunt them down. You'll have to watch this movie to discover their plan of attack on this invasive species.



PLASTIC PARADISE

57 minutes -- Best suited for Grades 9th-12th

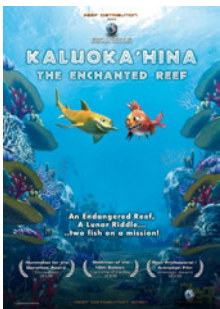
Join journalist and filmmaker Angela Sun in the movie *Plastic Paradise* as she journeys to the Great Pacific Garbage Patch and uncovers the mysteries of this remote phenomenon. Along with other researchers, she helps to shed some light on the effects that humanity's rabid plastic consumption is having on our global ecosystems. *This film contains graphic depictions of animal death and dissection.*



WILD PACIFIC

52 minutes -- Best suited for Grades 4th-12th

Directed by Emmy-nominated Michael Watchulonis, *Wild Pacific* is a sumptuous exploration of the amazing wildlife that populates the eastern Pacific Ocean from Baja California to the Galapagos Islands. At very few places on Earth is biodiversity so readily observable – and so apparently critical to the overall ecological health of our planet.



KALUOKA'HINA-THE ENCHANTED REEF

33 minutes -- Best suited for Grades PreK-4th

“Kaluoka’hina – The Enchanted Reef” offers a gripping story, is full of humor, and teaches us in a playful way to protect our environment. Kaluoka’hina, a gloriously colorful tropical reef, is under a spell: It is undiscoverable by men. Kaluoka’hina’s colorful inhabitants have thus always lived in peace, until the volcano erupts, and the spell is broken. Now it’s up to Shorty and Jake to restore the magic of Kaluoka’hina. Their only lead: the ancient legend that tells of touching the moon.