

## MASON BEE HOUSE

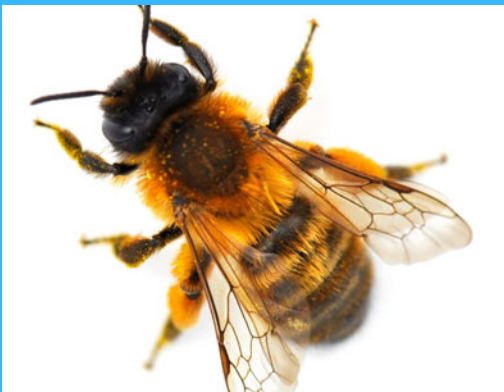
Make a house for the friendly mason bee!

### WHAT ARE MASON BEES?

Mason bee is the common name for different species of bees in the genus *Osmia*. These bees are about half the size of honeybees, frequently metallic green or blue in color and rarely sting.

Unlike honeybees and bumblebees, mason bees are solitary, meaning they live alone and make individual nests. These nests are how they get their name, as they construct their nests in gaps between stones or other dark places, using mud or other “masonry” materials.

While they do not produce honey or beeswax, these bees are still very important pollinators, with many agricultural places encouraging their presence to help with pollination and plant production. The males do not have a stinger, and the females will only sting if trapped or squeezed. This makes them an ideal neighbor for the home garden, since they pose little to no threat of stinging.



It's easy to build a house for mason bees and do your part to help these very effective pollinators. Just two or three females can pollinate a mature apple tree!



### WHAT YOU WILL NEED

- Bamboo pieces
- Clippers/loppers
- Gloves
- Tin cans (emptied & cleaned)
- Hammer and nail
- Twine/string
- Ruler
- Marker/pen

### Optional Additional Supplies

- Paint/decorations for the cans
- Cardboard tubes, PVC pipe scraps, rolled-up magazine pages, etc., to use instead of bamboo pieces



### STEP 1

Use nail and hammer to puncture one or two holes in the tin can.



### STEP 2

Loop twine/string through the hole(s) so that the tin can will be able to hang.



### STEP 3

Use ruler to measure can length and bamboo pieces to fit in the can.



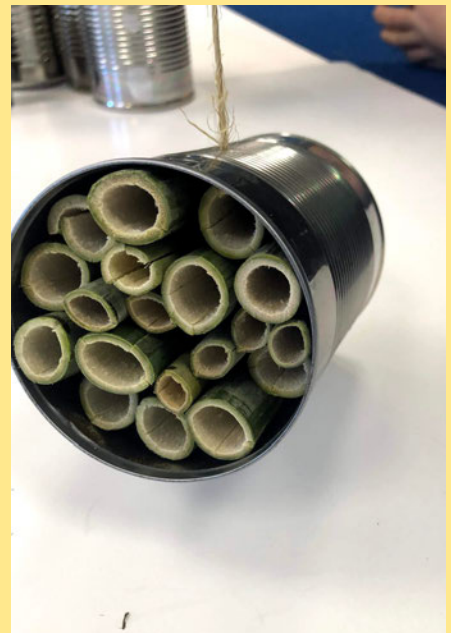
### STEP 4

Use clippers/loppers to cut the bamboo pieces where marked.



### STEP 5

Fill can with cut bamboo pieces until full. Make sure the pieces are in tight.



### STEP 6

You're all done! Hang outside for the mason bees to enjoy!